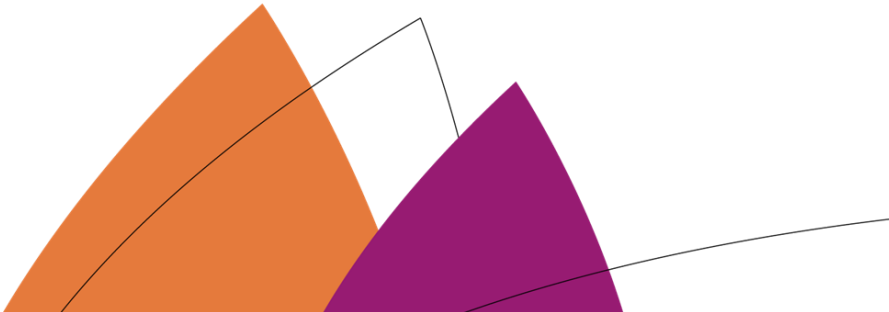




# CAAC Design and Construction Update

9-15-2022



# 2022 Projects

## New Buildings & Additions

# Marshdale ES - Replacement HCM - GC GH Phipps

## Construction

Move-in Oct 24



# Marshdale ES - Replacement HCM – GC GH Phipps

Construction



# Marshdale ES - Replacement HCM – GC GH Phipps

Construction



# Prospect Valley ES - Replacement MOA – GH Phipps

Construction



# Prospect Valley ES - Replacement MOA - GH Phipps

Construction



# Jeffco Open - Auditorium Addition HCM - Bassett

Construction





# Jeffco Open - Auditorium Addition HCM - Bassett

Construction



Ralston Valley HS  
10 Additional Classrooms  
EUA - Himmelman



# Standley Lake HS – Aux Gym Addition Cannon – FCI Constructors

Construction



# Standley Lake HS - Aux Gym Addition Cannon – FCI Constructors

Construction



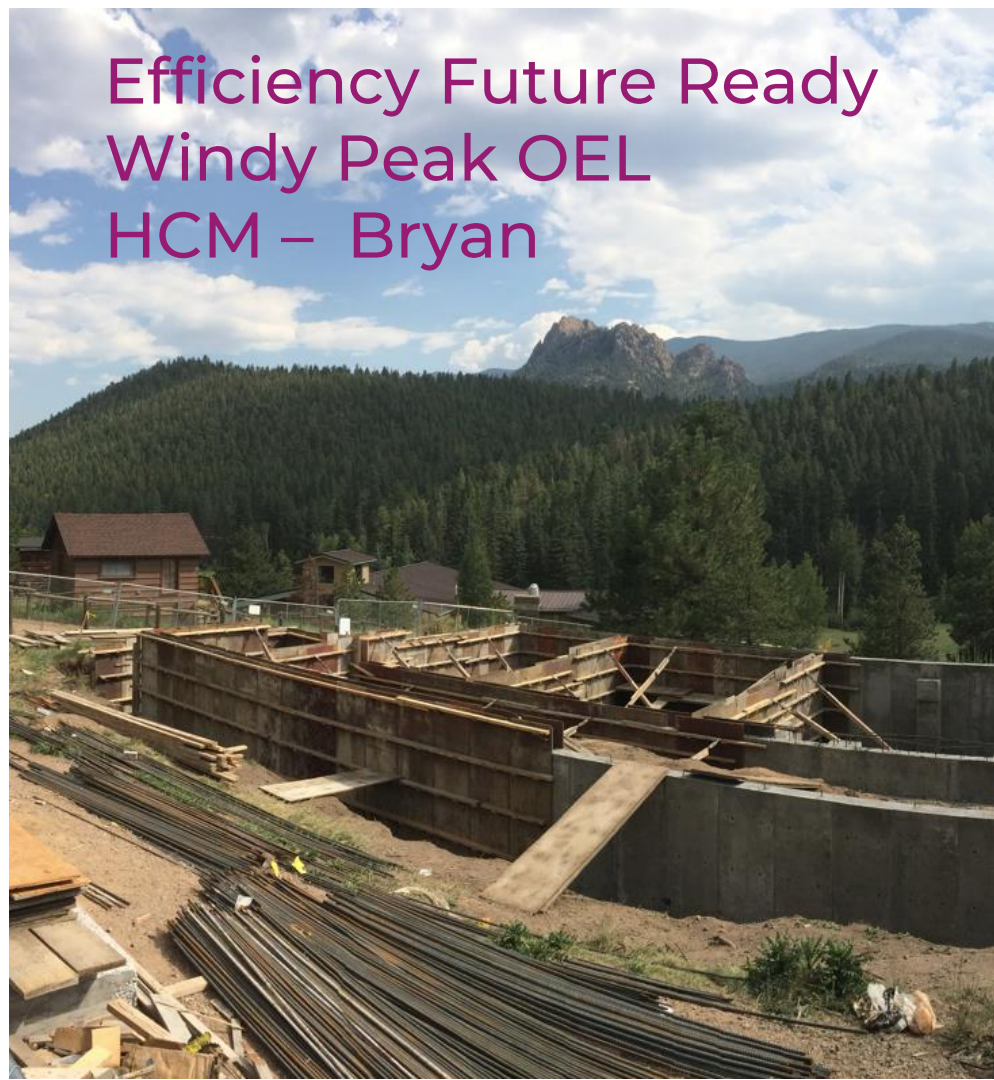
# Standley Lake HS - Aux Gym Addition Cannon – FCI Constructors

Construction



Efficiency Future Ready  
Windy Peak OEL  
HCM – Bryan

Construction



Efficiency Future Ready  
Mount Evans OEL

HCM – GH Phipps

Construction



# DW LED 2022

## Ackerman – CMGC McKinstry

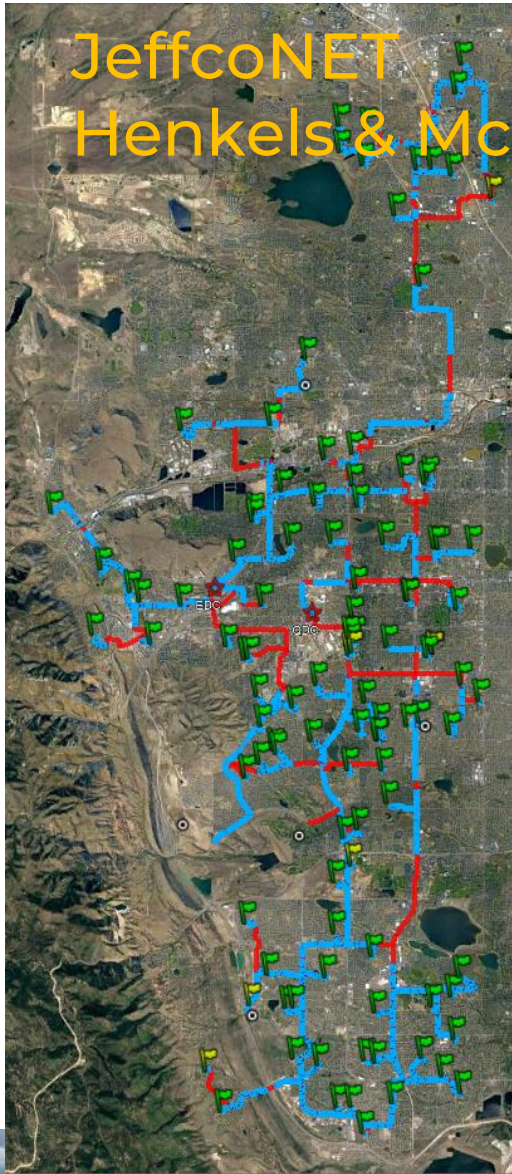
### Construction Documents



1. Brady
2. Bradford North
3. Bradford South
4. Ute Meadows ES
5. Leawood ES
6. Normandy ES
7. Rooney Ranch ES
8. Creighton MS
9. Moore MS
10. Mandalay MS
11. Deer Creek MS
12. Lawrence
13. Weber ES
14. Meiklejohn
15. West Woods
16. Chatfield HS (Oct)
17. Dakota Ridge HS (Nov)



# JeffcoNET Henkels & McCoy



## Project Information

Project Start  
April 29, 2020

Total Miles of conduit  
to be bored 114

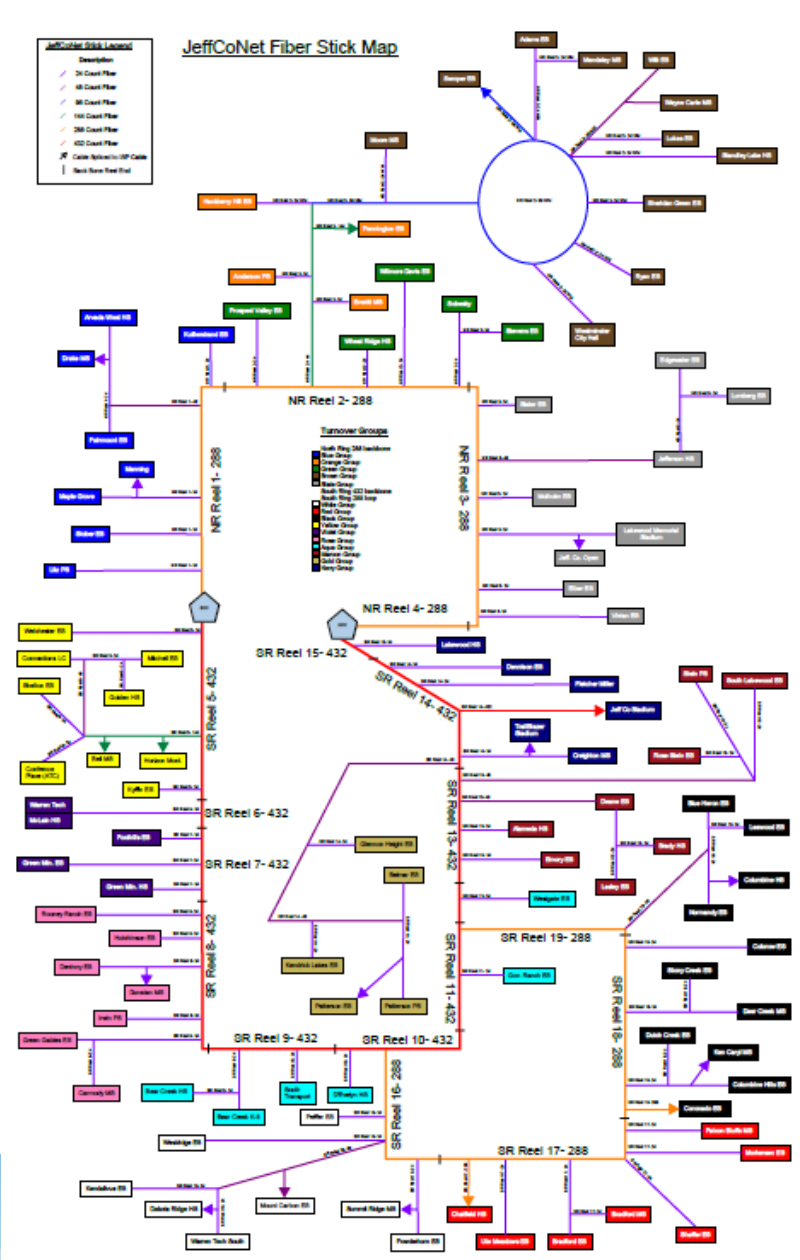
Miles installed  
90 (79%) (Blue)

Fiber placed at  
106 of 111 schools  
(MDF to Street)

JeffCoNet Stick Legend

Description	
	20' Conduit Fiber
	48' Conduit Fiber
	80' Conduit Fiber
	100' Conduit Fiber
	300' Conduit Fiber
	400' Conduit Fiber
	Cable Network to SR Data
	Back Bone Trunk End

JeffCoNet Fiber Stick Map



# 2023 Efficiency Future Ready & DW projects

# Efficiency Future Ready Wheat Ridge HS

Construction  
Documents

Eidos – TBD



# Efficiency Future Ready

# Design

Location	Sched	Description	Phase	A/E
UTE Meadows	9/1/2022	Late Summer Re-Bid Efficiency & Future Ready	Bid	MOA
Blue Heron	9/1/2022	Late Summer Re-Bid Efficiency & Future Ready	Bid	MOA
Mortensen	9/1/2022	Late Summer Re-Bid Efficiency & Future Ready	Bid	DLH
Shaffer	9/1/2022	Late Summer Re-Bid Efficiency & Future Ready	Bid	DLH
Governors Ranch	9/1/2022	Efficiency & Future Ready	Design Development	MOA
Bear Creek K-8	9/1/2022	Efficiency & Future Ready	Design Development	MOA
Falcon Bluffs MS	9/1/2022	Efficiency & Future Ready	Design Development	MOA
Sobesky	9/1/2022	Efficiency & Future Ready - moving up 1 year	Design Development	Eidos
Pennington ES	9/1/2022	Efficiency & Future Ready Add one section of roof to raise mech unit	Design Development	Eidos
DW Mechanical 2023	9/1/2022	Westwoods \$1,174,950 Bradford South \$1,304,100 Sobesky (old stevens) \$777,000 boiler priority may be	Design Development	Columbine
Edgewater	9/1/2022	Efficiency & Future Ready	Design Development	HCM
Ken Caryl	9/1/2022	Efficiency & Future Ready -	Design Development	HCM
Wheat Ridge	9/1/2022	Efficiency & Future Ready	Design Development	Eidos
Little	9/1/2022	Efficiency & Future Ready	Design Development	Treanor HL
S Lakewood	9/1/2022	Efficiency & Future Ready	Design Development	Treanor HL
Connections	9/1/2022	Efficiency & Future Ready	Design Development	Treanor HL
Coal Creek K8	9/1/2022	Efficiency & Future Ready	Design Development	RB+B
Warren Tech Central	9/1/2022	Efficiency & Future Ready -	Design Development	HCM
Deer Creek/ Mandalay / Moore MS	9/1/2022	Late Summer Bid Efficiency & Future Ready - 168,000 flooring was completed at deer creek	Construction Documents	RB+B
Kendallvue	9/1/2022	Efficiency & Future Ready	Design Development	H&M
Mt Carbon	9/1/2022	Efficiency & Future Ready	Design Development	Eidos
Summit Ridge	9/1/2022	Efficiency & Future Ready	Design Development	H&M
Drake Middle	9/1/2022	Efficiency & Future Ready	Design Development	MOA
Dunstan MS	9/1/2022	Efficiency & Future Ready	Design Development	MOA

# School Closings & Consolidations

# School Closings & Consolidations

Special Meeting-Study/Dialogue Session  
Thursday, August 25, 2022

## Schools Closing:

**Bergan Meadow ES (2024)** -----  
**Campbell ES (2024) (ECE Center)** -----  
**Colorow ES (2024)** -----  
Emory ES -----  
  
**Glennon Heights ES (2024)** -----  
Green Mountain ES -----  
Kullerstrand ES -----  
**Molholm ES (2024)** -----  
**Parr ES (2024)** -----  
**Peiffer ES (2024)** -----  
Peck ES -----  
Sheridan Green -----  
Thomson ES -----  
Vivian ES -----  
Wilmore Davis ES -----  
Witt ES -----

## Consolidating To:

**Bergan Valley ES (7CR Addition)**  
Vanderhoof & **Fremont (Kitchen Work)**  
Powderhorn ES  
**Lasley ES (ADA, Office & Parking)**  
**Stein ES (ADA upgrades)**  
Belmar ES  
Foothills ES  
**Prospect Valley ES (8CR Addition)**  
Lumberg ES  
Little ES (2023)  
Kendallvue ES (2023) **(Add Kitchen Work)**  
Secret ES  
Ryan ES  
Swanson ES (2023)  
**Stober ES (5CR Addition + Kitchen)**  
Stevens ES  
**Lukas ES (Kitchen Work Needed)**

# School Closings & Consolidations

Special Meeting-Study/Dialogue Session

Thursday, August 25, 2022

## Prospect Valley ES (8CR Addition) MOA & Phipps CMGC



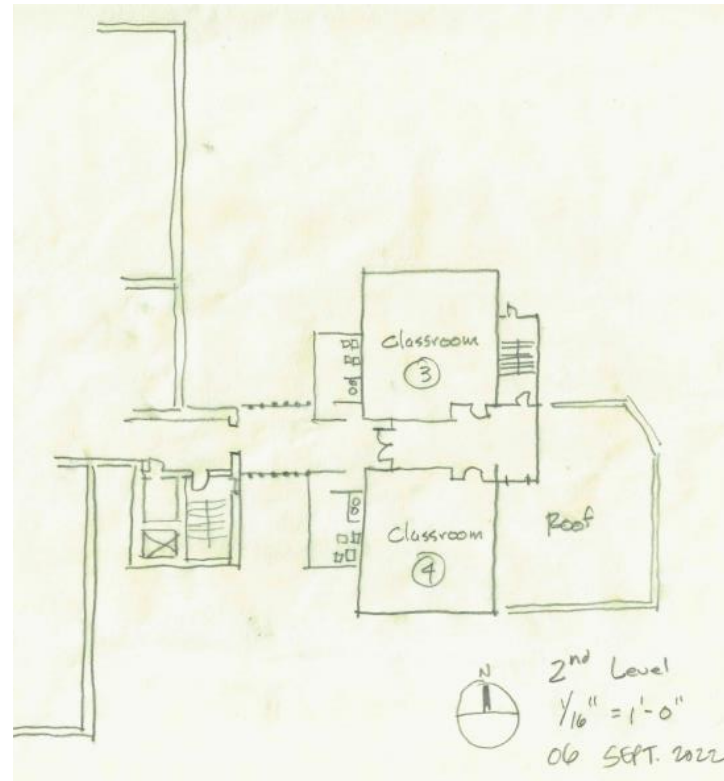
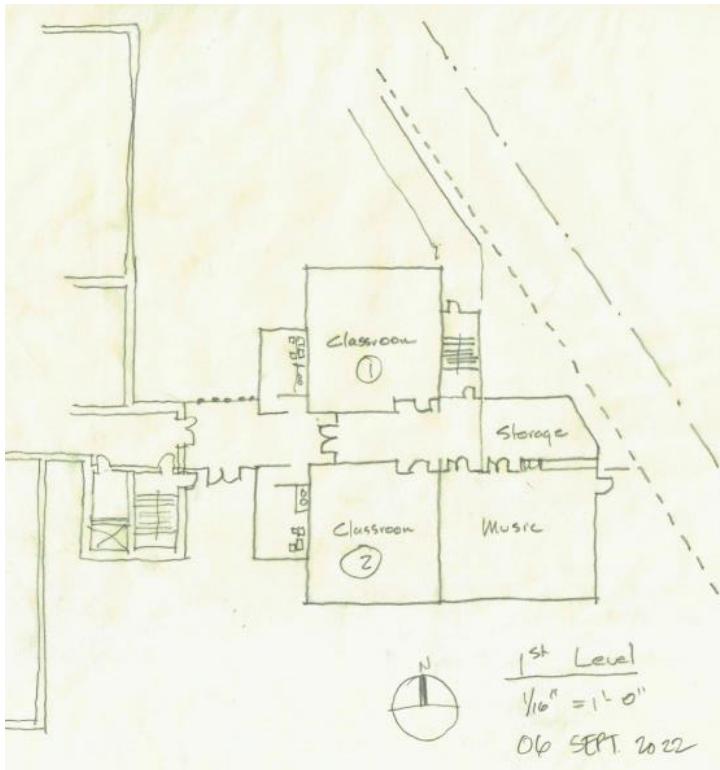
# School Closings & Consolidations

Special Meeting-Study/Dialogue Session

Thursday, August 25, 2022

**Stober ES**

**(5CR Addition + Kitchen) LOA & CMGC TBD**





# School Closings & Consolidations

Special Meeting-Study/Dialogue Session

Thursday, August 25, 2022

## Bergen Valley ES (7CR Addition) EUA & GC TBD



# School Closings & Consolidations

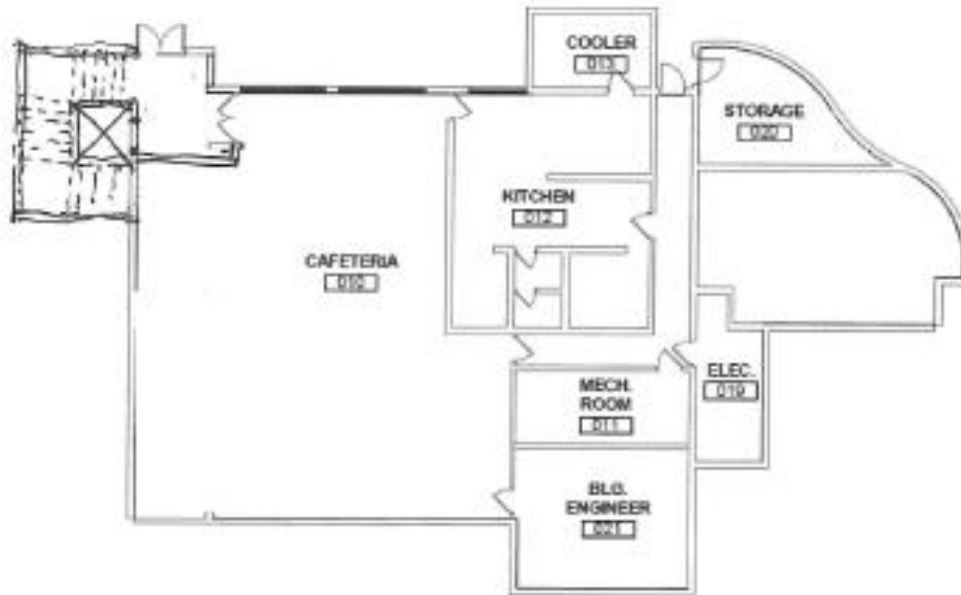
Special Meeting-Study/Dialogue Session

Thursday, August 25, 2022

**Stein ES**

**(Elevator/Stair Addition)**

**HCM & CMGC TBD**



**A3 LOWER FLOOR PLAN**  
1/16" = 1'-0"

# School Closings & Consolidations

Special Meeting-Study/Dialogue Session

Thursday, August 25, 2022

**Lasley ES**

**(ADA Lifts / Toilet Rooms, Admin & Parking) H&M & CMGC TBD**



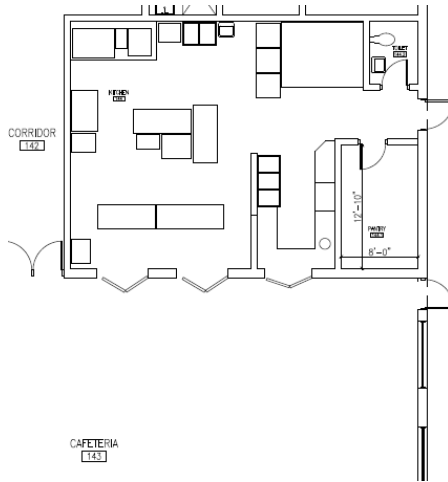
# School Closings & Consolidations

Special Meeting-Study/Dialogue Session

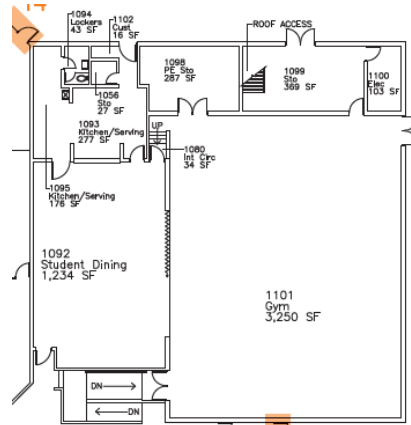
Thursday, August 25, 2022

## Kitchen Improvements

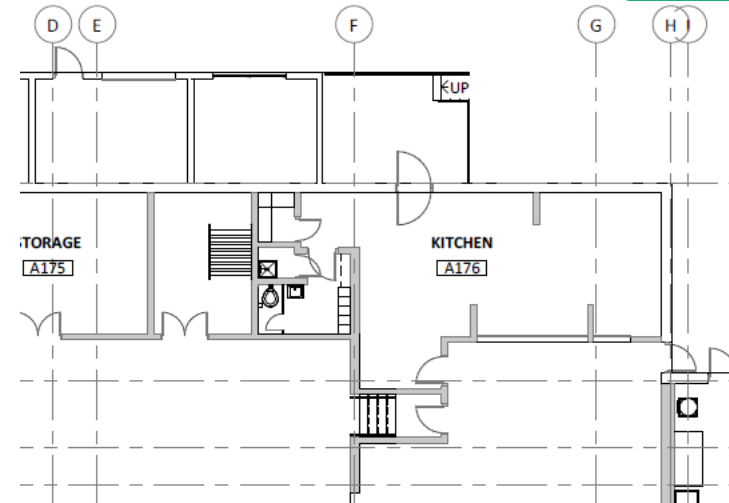
**Fremont ES**  
**(Wilmore Davis Re-design)**  
**Eidos GC TBD**



**Kendallvue ES**  
**H&M GC TBD**  
**1,000 SF**



**Lukas ES**  
**RB+B GC TBD**  
**1,000 SF**



# Program Verification & Feasibility Study – DLR Group

DAG #1  
9/8/22

Fletcher Miller Special School  
\$16,000,000

BOE Jun 08, 2022 - Special Meeting-Study/Dialogue Session  
Capital Investments for Thriving Schools



# Next Meeting 10/20/22